

WELCOME BROCHURE CAMPING



Tips for a good, safe and environmentally friendly stay

(Merkenveld Team and volunteers thank you in advance)

CHECKLIST

MANDATORY TO HAVE WITH YOU:

- ☐ **Fire extinguishers:** at least an approved powder extinguisher (ABC) of at least 6kg or an approved foam extinguisher (AB) of at least 6 litres. Merkenveld offers the possibility to rent a powder extinguisher at €1 per day + a **cash** deposit of €100.
- ☐ **Emergency kit**
- ☐ If applicable: **gas cookers** that comply with the applicable regulations and of which all parts are in good condition, in order to assemble them professionally and leakfree
- ☐ For safety reasons: submit an accurate **attendance list** at the reception of Merkenveld on the day of arrival or in advance by emailing to merkenveld@hopper.be

SCOUTS EN GIDSEN VLAANDEREN VZW MERKENVELD

MERKENVELDWEG 15 • B 8210 ZEDELGEM-LOPPEM • T +32 (0)50 27 76 98 • MERKENVELD@HOPPER.BE
WWW.HOPPER.BE/MERKENVELD • REKENING IBAN BE45 4762 0352 5189 • BIC KREDBEBB

MAATSCH. ZETEL: SCOUTS EN GIDSEN VLAANDEREN VZW • WILRIJKSTRAAT 45 • B 2140 ANTWERPEN

Rules of Play

GENERAL

- inform all the leaders of this information and make your members aware of it
- keep it quiet and clean, safe and environmentally friendly
- do not disturb our neighbours, keep it quiet and polite, do not ring the bell of nearby houses

SOUND AND NOISE

- silence from 10 p.m. (at the campfire circle from 11 p.m.)
- no amplification, megaphone, firecrackers and fireworks
- always report evening games
- respect the night's rest of the animals, neighbours and other resident groups

PARKING GUIDELINES

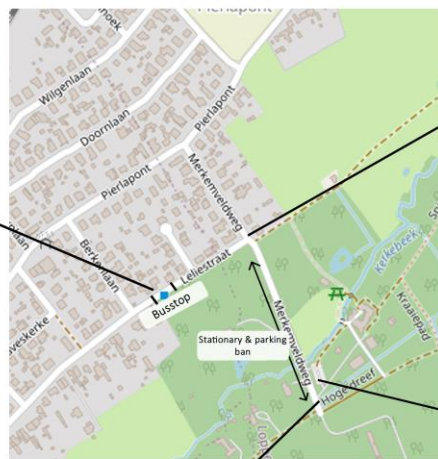
- Merkenveld is car-free, parking is only possible on the parking lot and along the nearby streets. Be careful where you park along the streets (see pictures and explanation)!
- In the Merkenveldweg, from the intersection with the Leliestraat towards the Hopper parking, there is a no parking zone!
- Prohibited from parking on a two-way street opposite another stationary or parked vehicle if this would make it difficult for two other vehicles to cross each other
- Have a parking attendant post up in Merkenveldweg when parents bring/pick up members.
- Please provide us with your number plates upon arrival, so we can notify you if you are parked illegally.
- If your group brings its own bus, we ask you to park it only on the bus parking area (see map) and not to drive any further, not even to load and unload. There are push carts available to unload luggage and/or material.

Parking along the street is possible, provided you observe the following regulations:

- 1) Parking in the direction of travel
- 2) No parking in front of driveways



- 3) Parking is prohibited less than 15 meters on either side of the bus stop sign



- 4) Do not park in the bend and as long as there are white continuous or interrupted lines

Parking Hopper Merkenveld

Bus Parking

HOPPER MERKENVELD

SCOUTS EN GIDSEN VLAANDEREN VZW MERKENVELD

MERKENVELDWEG 15 • B 8210 ZEDELGEM-LOPPEM • T +32 (0)50 27 76 98 • MERKENVELD@HOPPER.BE

WWW.HOPPER.BE/MERKENVELD • REKENING IBAN BE45 4762 0352 5189 • BIC KREDBEBB

MAATSCH. ZETEL: SCOUTS EN GIDSEN VLAANDEREN VZW • WILRIJKSTRAAT 45 • B 2140 ANTWERPEN

LOADING AND UNLOADING

- you can drive up to the loading and unloading area twice per camping period, once on arrival to unload and once on departure to load;
- maximum speed on the access road to the loading and unloading zone: 5 km/h;
- Merkenveld provides push carts;
- loading and unloading between 10 pm and 8 am is not allowed;
- no trucks are allowed into the loading and unloading zone! The truck must be stationed in the Leliestraat or Merkenveldweg and all material and luggage can be brought to the camping site using Merkenveld's push carts.

RECEPTION

- on arrival, always report to the reception first, where we go over the most important information and agreements;
- in the context of safety, you must submit an accurate attendance list at Merkenveld reception on the day of arrival or in advance by emailing to merkenveld@hopper.be;
- for all questions you come to the reception where a volunteer or staff member helps you further;
- the reception is open from 8h-22h; there may be changed opening hours during the summer holidays;
- during the summer holidays you give when you arrive the license plates of your vehicles and the name and mobile phone number of a person in charge who can be reached at all times; this mobile phone number is also added to the WhatsApp group 'Merkenveld zomer'; all present groups, holiday-residents and staff are in this large WhatsApp group during their stay; this WhatsApp group is only used for following appointments: bread orders, shower reservations, opening barriers, agreeing on a checkpoint when the group leaves, opening the containerpark and informing the group in case of wrong parking; outside the opening hours of the reception desk you can also ask urgent questions on the WhatsApp group; agreements or discussions between the accommodation groups themselves cannot be made in this WhatsApp group;
- We also ask for the name and mobile number of the first aid responsible;
- in the reception there is a mailbox for each group; also in the reception the ordered bread for each group will be here every morning. a lockable compartment is available in the fridge area for charging mobile phones (bring your own padlock!);
- every day at 9 o'clock (or in consultation with the holiday director at another time) there is a camp council on the domain; of each group one person is expected at the camp council every day; bring your own cup, we will provide the coffee;
- during this short meeting information is given, you can ask questions, place orders, make reservations; try to make as many appointments as possible with the holiday director during this camp council;
- Merkenveld is not responsible for theft; there is a locker available in the refrigerator room for valuables (bring your own padlock!; always report theft to Merkenveld reception!

FIRE SAFETY

- it is compulsory to have fire extinguishers with you: at least one approved powder extinguisher 6 kg or foam extinguisher 6 l (powder extinguisher can be rented at 1.00 euro per day + a cash deposit of 100.00 euro)
- make sure that the fire can spread as little as possible to other tents, keep a distance of 4 metres between (blocks of) tents
- Never leave a wood or gas fire unattended.
- It is forbidden to light fires and smoke in the forest.
- the costs of fire fighting will be charged to the offending group

CAMPFIRE AND WOOD FIRES

- only after permission - Merkenveld can at all times issue a fire ban
- campfire only in the campfire circle with the fire truck! - You can pick up the fire truck at the reception

SCOUTS EN GIDSEN VLAANDEREN VZW MERKENVELD

MERKENVELDWEG 15 • B 8210 ZEDELGEM-LOPPEM • T +32 (0)50 27 76 98 • MERKENVELD@HOPPER.BE
WWW.HOPPER.BE/MERKENVELD • REKENING IBAN BE45 4762 0352 5189 • BIC KREDBEBB
 MAATSCH. ZETEL: SCOUTS EN GIDSEN VLAANDEREN VZW • WILRIJKSTRAAT 45 • B 2140 ANTWERPEN

- cooking and wood fires only in above ground barrels or containers, which are closed at the bottom and on the sides (not in and on the ground), flames come out no higher than 50 cm above the top edge, Merkenveld provides free fire barrels
- only burn dead cedar wood or untreated pure wood from the trade, certainly no waste.
- place your stock of gleaned wood at least 5 metres from your fire
- prepare buckets of extinguishing water and extinguish your fire completely (with pond or stream water) when you leave it; at the campfire you should use the extinguishing trolley
- dump the remains of fire pots in the campfire circle.
- in extreme drought, there may be a fire ban, even a ban on cooking over an open fire; inform yourself and organize yourself in advance.

GAS FURNITURE

- Gas cookers must comply with the applicable regulations, be in optimal condition, be expertly installed and leak proof, use them only in the open air, open tent or shelter
- shield your gas cylinders from sun, heat and fire and position them vertically and impact-free
- always close the gas valve of the gas cylinder when not in use
- gas bottles can be purchased at Euroshop Veldegem, Horta Jonckheere Tuincentrum Zedelgem ou Rumix Ruddervoorde.

FORESTRY AND NATURE

- Do not damage trees and bushes, respect young plantations.
- Cutting living trees (or their branches), axes and saws are prohibited in the forest.
- Do not dig holes or trenches, do not throw anything into the pond, pool or Kerkebeek.
- play in a forest friendly way: limit noise and speed, tidy up all playing material
- we divide the playforest into three parts; a part of the playforest can be reserved, so that you can play a forest game with your own group without hindrance

WATER AND ENERGY

- Be economical with water
- There is no electricity available on the sites, it is not allowed to bring generators.
- We provide a water line with a tap; each group is allocated its own tap (linked to the name of the campsite).
- there is a refrigerator room; we ask the groups to bring their own refrigerator! Merkenveld has a few devices, but during the busy summer holidays we cannot guarantee that a device will be available. On the fridge we will put a sheet with the name of the group and the campsite; the door of the fridge room is open from 8 am to 10 pm.
- in the reception area phones and such can be charged (see further)

WASTE

- see also waste sorting guide further on
- avoid waste: buy fresh food in bulk, in large packagings or in returnable packaging
- In order to avoid wasting food, we give some guidelines for quantities:
 - Bread: 7-11 years: 1 bread per 8 children - 12-16 years: 1 bread per 6 children - +16 years: 1 bread per 5 children
 - Bread topping: 7-11 years: 3 slices per bread meal - +12 years: 4 slices per bread meal
 - Pasta: 75g per child - 100g per adult
 - Pasta sauce: 200g per child - 350g per adult
- all waste is sorted! - transparent garbage bags and PMD bags can be bought at the reception desk - a garbage bag costs €3,5, a PMD bag costs €1; only the bags bought at the reception

desk are accepted in our waste sorting park; also paper and cardboard and food waste can be offered at our waste sorting park; in case of badly sorted waste we charge €5 per bag;

- you have to bring your own glass to the glass bulb in street 'Pierlapont' (see plan on next page), coarse waste you have to take back home
- ask the Merkenveld employee to open the waste sorting park and bring your waste there

CLEANING IN TURN

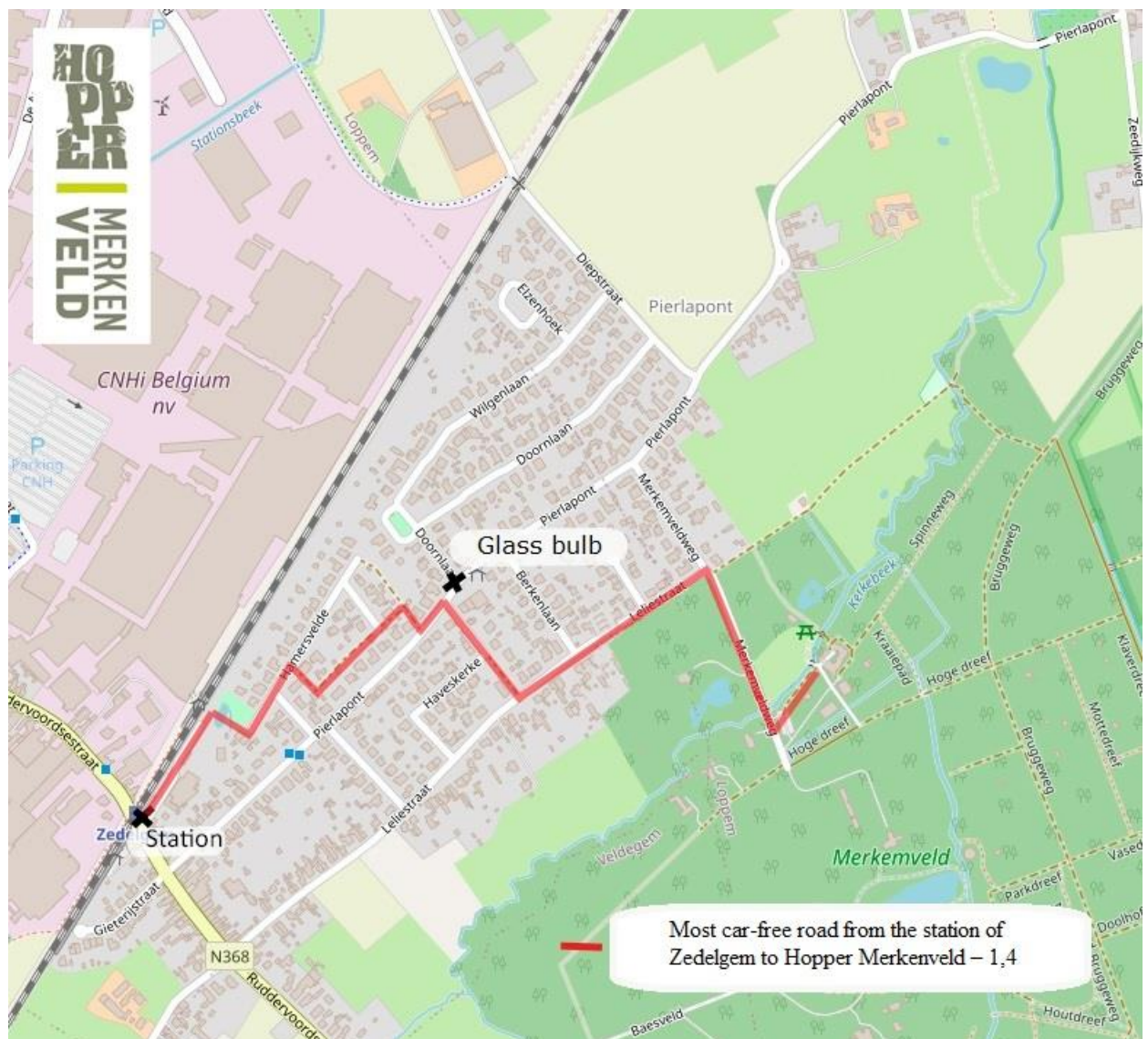
- during the summer holidays every day a different group cleans the sanitary block (toilets, sinks, refrigerator area, surroundings of the sanitary block); this is done via a turn-key system; a volunteer from the reception opens and closes the cleaning room at the sanitary block

INTERNET

- free wifi is available around the buildings, including the sanitary block of the campers;
- select the network 'Visitors', open your browser, accept the terms of use, no password is required;

REACHABILITY

- The railway station of Zedelgem is at 1,4 km from Hopper Merkenveld. On the map below you see a pleasant, car-free route from the station to Merkenveld.



SCOUTS EN GIDSEN VLAANDEREN VZW MERKENVELD

MERKENVELDWEG 15 • B 8210 ZEDELGEM-LOPPEM • T +32 (0)50 27 76 98 • MERKENVELD@HOPPER.BE

WWW.HOPPER.BE/MERKENVELD • REKENING IBAN BE45 4762 0352 5189 • BIC KREDBEBB

MAATSCH. ZETEL: SCOUTS EN GIDSEN VLAANDEREN VZW • WILRIJKSTRAAT 45 • B 2140 ANTWERPEN



Vlaanderen
is toerisme

Merkenveld is recognized by Toerisme Vlaanderen as a youth accomodation with the classification 'comfort'.

WASTE SORTING GUIDE

PMD → sorting in the blue PMD bag (bleu PMD-roller container)

+ Plastic packaging:

Bottles, flasks, srew caps, trays, pots and tubes, foils, pouches, cups

+ Metal packaging:

Beverage and canning cans, aerosols (not all!! See opposite), aluminium containers and trays, lids, caps and crown caps

+ Beverage cartons (tetra) e.g. of milk and fruit juice



- packaging consisting of different materials

- polystyrene

- packaging for paint, glue, motor oil, etc.

- aluminium foil

- child-resistant fastenings

- pachaging (e.g. spray cans) with one of these symbols



PAPER EN CARDBOARD → sorting into cardboard box

+ newspapers and magazines
+ writing paper
+ paper labels from jars and tins
+ paper and cardboard packaging
+ egg cartons
+ bread bags



- wallpaper

- dirty, greasy and painted paper and cardboard

- paper napkins and hardkerchiefs

-kitchen paper

FOOD WASTE → sorting in round brown or white barrel

+ raw vegetable and fruit residues
+ potato peelings
+ leftovers from prepared meals
+ bread and cakes



- mouldy and rotten food

- pachaging material

- egg shells

- coffee grounds and filter bags

- ashes

- kitchen paper

GLASS → TAKE IT YOURSELF TOT THE GLASS BULB IN THE STREET 'PIERLAPONT'

+ empty, rinsed glass bottles and jars
+ broken drinking glasses



- refundable bottles

- lids and corks



- lamps

- mirrors



- flat glass

- porcelain en earthenware



RESIDUAL WASTE**→ SORTING IN TRANSPARANT BAGS**

 <ul style="list-style-type: none"> + all waste that cannot be sorted 	 <ul style="list-style-type: none"> - waste that can be sorted at the waste fractions listed above - Small hazardous waste - coarse waste
---	---

KGA (Klein Gevaarlijk Afval = Small hazardous waste) → to be handed in at the reception

 <ul style="list-style-type: none"> + empty batteries + paint and varnish residues + glue + chip fat + aerosol of insecticide 	 <ul style="list-style-type: none"> - waste that can be sorted at the above-mentioned waste fractions
---	---

! COARSE WASTE**→ TAKE IT HOME, WE DO NOT ACCEPT COARSE WASTE**

 <ul style="list-style-type: none"> + tents + tarpaulins + scenery parts + furniture + clothing 	 <ul style="list-style-type: none"> - waste that can be sorted at the above-mentioned waste fractions
---	---

EMERGENCIES AND EMERGENCY NUMBERS

AT EMERGENCIES:

- Stay calm.
- Always contact an employee of Merkenveld on the reception of call the Merkenveld number 0(032)50/27.76.98.
- The evacuation zone is between the street Merkenveldweg en the and unloading area (orchard); see map on the last page.



loading

WHEN CALLING THE EMERGENCY NUMBER 112 YOU STATE:

- "With(your first name and surname) from scouts domain Merkenveld, camping area(number camping area), Merkenveldweg 15 in Loppem- Zedelgem."
- What exactly happened? What is the emergency situation?
- How many victims are there? How many people are in danger?

Have someone wait for the emergency services at the Merkenveldweg and notify a Merkenveld employee!

MEDICAL EMERGENCY AND FIRE SERIES: tel. 112, install app 112BE on your smartphone (this way your exact location will be communicated immediately) + notify the reception of Merkenveld

POLICE: tel. 101 + notify the reception of Merkenveld

ANTI-POISON CENTRE: tel. 0(032)70/245.245

DOCTOR: Doctor practice Te Velde, Kloosterstraat 131, 8210 Zedelgem, tel. 0(032)50/27 74 18

<http://www.huisartsentevelde.be> (if possible, make an online appointment)

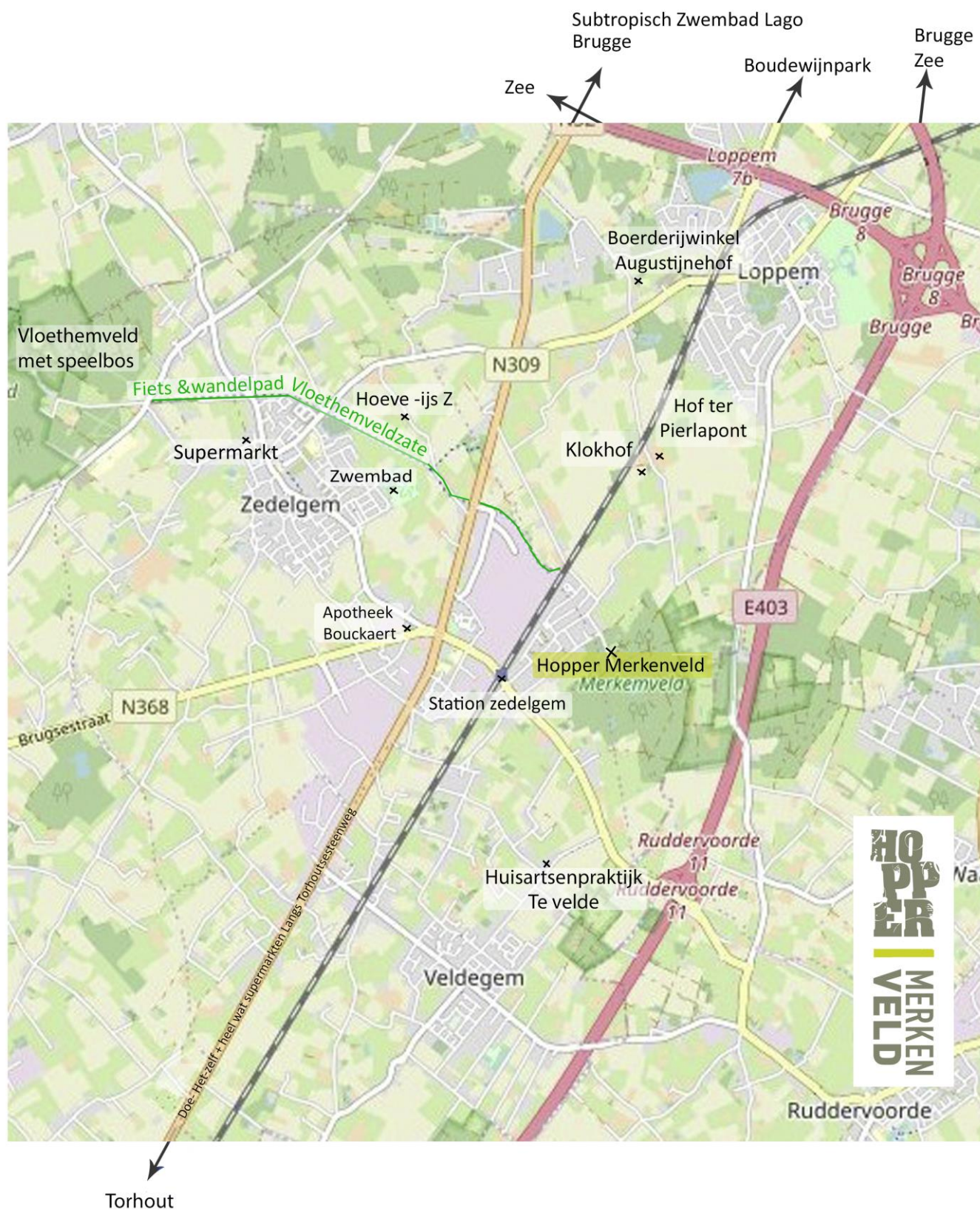
DOCTOR'S WAITING DEPARTMENT: www.mediwacht.be, tel. 1733 (fri 20u to mon 8u)

PHARMACY: Bouckaert, Groenestraat 189, 8210 Zedelgem, tel. 0(032)50/20.97.50

ATTENTION SERVICE PHARMACY: www.apotheek.be, tel. 0(032)900/10.500 (until 22u) of 0(032)903/922.48 (between 22u and 9u) (0,50 EUR/min)

MEDICAL HOSPITAL: AZ Delta campus Torhout (at 10 km), St.-Rembertlaan 21, 8820 Torhout, tel. 0(032)50/23.21.11 of AZ St. Jan (at 12,6 km), Riddershove 10, 8000 Brugge, tel. 0(032)50/45.21.11

ATTENTION SERVICE DENTISTS: www.tandarts.be/wachtdienst



Contact details see next page

SCOUTS EN GIDSEN VLAANDEREN VZW MERKENVELD

MERKENVELDWEG 15 • B 8210 ZEDELGEM-LOPPEM • T +32 (0)50 27 76 98 • MERKENVELD@HOPPER.BE

WWW.HOPPER.BE/MERKENVELD • REKENING IBAN BE45 4762 0352 5189 • BIC KREDBEBB

MAATSCH. ZETEL: SCOUTS EN GIDSEN VLAANDEREN VZW • WILRIJKSTRAAT 45 • B 2140 ANTWERPEN

- Hoeve-ijs Z, Zaggebroekstraat 2, 8210 Zedelgem, 0479/92.01.52, www.hoeveijsz.be
- Hof Ter Pierlapont, Zeedijkweg 23, 8210 Zedelgem, 0478/76.59.65,
www.pierlapont.be
- Klokhof summerbar, Zeedijkweg 20, 8210 Zedelgem, 050/28.00.20, facebook:
Klokhof Loppem zomercafé
- Farm shop Augustijnenhof, Rolleweg 32, 8210 Zedelgem, 0475/65.24.30,
www.augustijnenhof.be
- Swimming pool Zedelgem, De Groene Meersen, Stadionlaan 48, 8210 Zedelgem,
050/28.83.30, www.zedelgem.be/zwembad
- Subtropical swimming pool Lago Brugge Olympia, Doornstraat 110, 8200 Brugge,
050/67.28.70, www.lago.be/brugge
- Boudewijn Seapark, Alfons de Baeckestraat 12, 8200 Brugge, 050/38.38.38,
www.boudewijnseapark.be
- DIY centre Euroshop, Torhoutsesteenweg 370, 8210 Zedelgem, www.euroshop.be

SCOUTS EN GIDSEN VLAANDEREN VZW MERKENVELD

MERKENVELDWEG 15 • B 8210 ZEDELGEM-LOPPEM • T +32 (0)50 27 76 98 • MERKENVELD@HOPPER.BE
WWW.HOPPER.BE/MERKENVELD • REKENING IBAN BE45 4762 0352 5189 • BIC KREDBEBB

MAATSCH. ZETEL: SCOUTS EN GIDSEN VLAANDEREN VZW • WILRIJKSTRAAT 45 • B 2140 ANTWERPEN

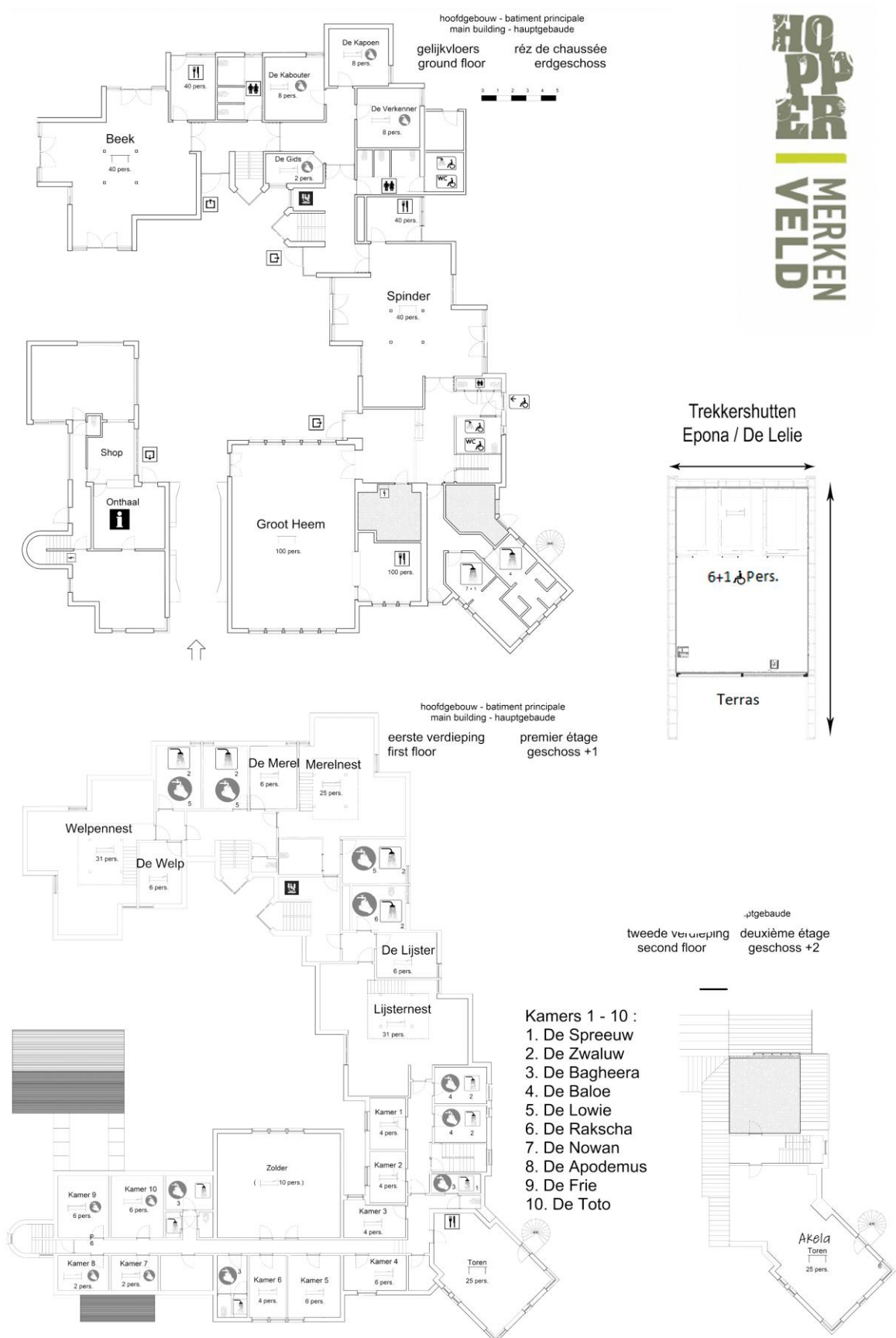


SCOUTS EN GIDSEN VLAANDEREN VZW MERKENVELD

MERKENVELDWEG 15 • B 8210 ZEDELGEM-LOPPEM • T +32 (0)50 27 76 98 • MERKENVELD@HOPPER.BE

WWW.HOPPER.BE/MERKENVELD • REKENING IBAN BE45 4762 0352 5189 • BIC KREDBEBB

MAATSCH. ZETEL: SCOUTS EN GIDSEN VLAANDEREN VZW • WILRIJKSTRAAT 45 • B 2140 ANTWERPEN



SCOUTS EN GIDSEN VLAANDEREN VZW MERKENVELD

MERKENVELDWEG 15 • B 8210 ZEDELGEM-LOPPEM • T +32 (0)50 27 76 98 • MERKENVELD@HOPPER.BE

WWW.HOPPER.BE/MERKENVELD • REKENING IBAN BE45 4762 0352 5189 • BIC KREDBEBB

MAATSCH. ZETEL: SCOUTS EN GIDSEN VLAANDEREN VZW • WILRIJKSTRAAT 45 • B 2140 ANTWERPEN